

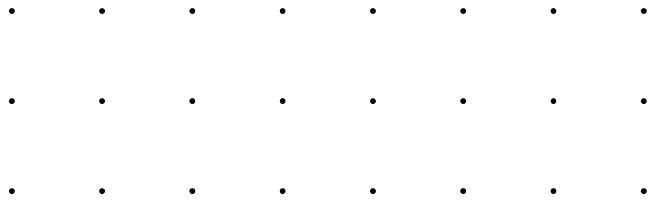
A 10x10 grid of dots on a white background. The dots are arranged in 10 rows and 10 columns, forming a square pattern. Each dot is a small black circle. The grid is centered on the page.

.
.
.

There are awesome spaces on campus
that maybe you didn't know!
All of them are available for booking
on Resource Booker (swin.edu.au)

.
.
.
.
.
.

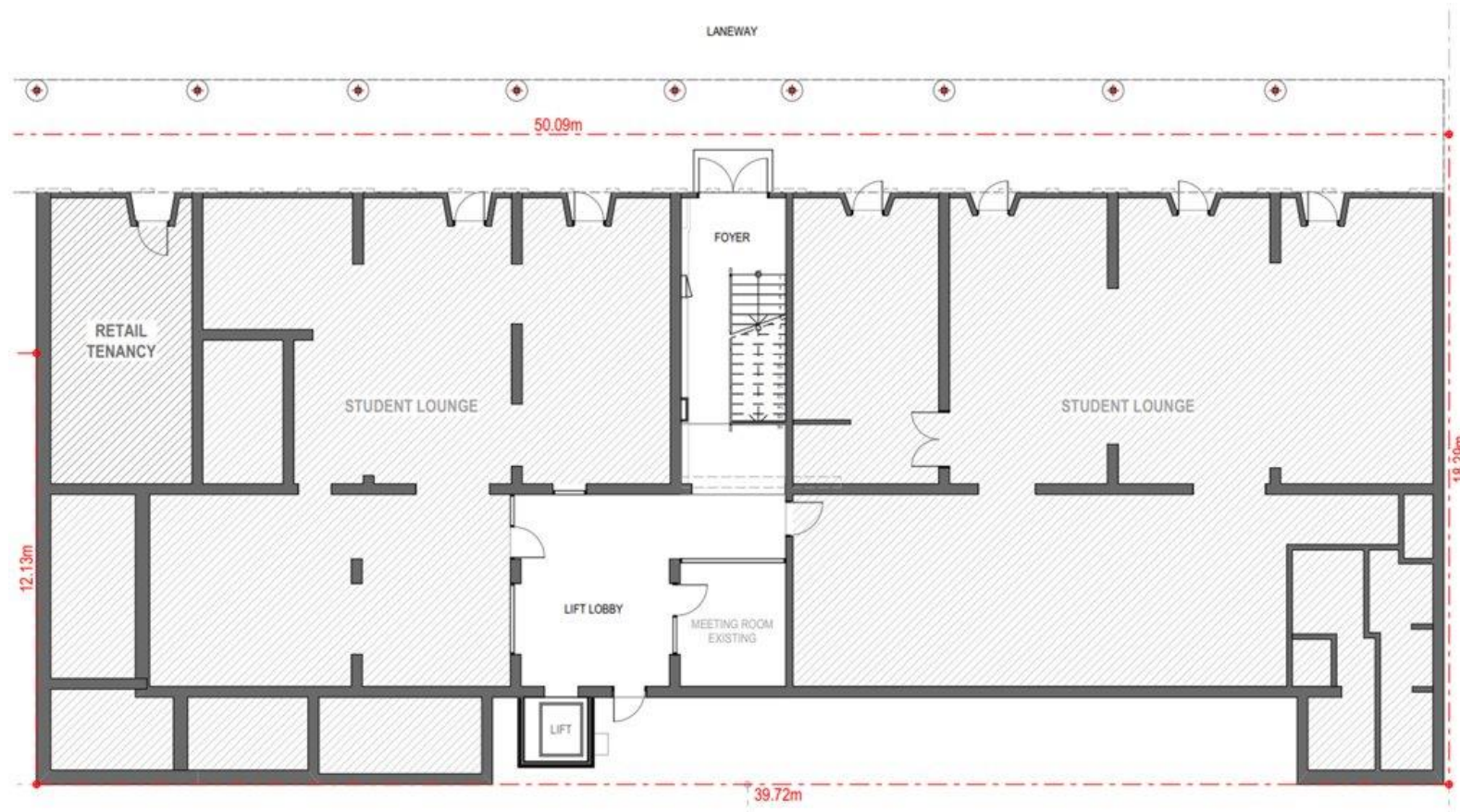




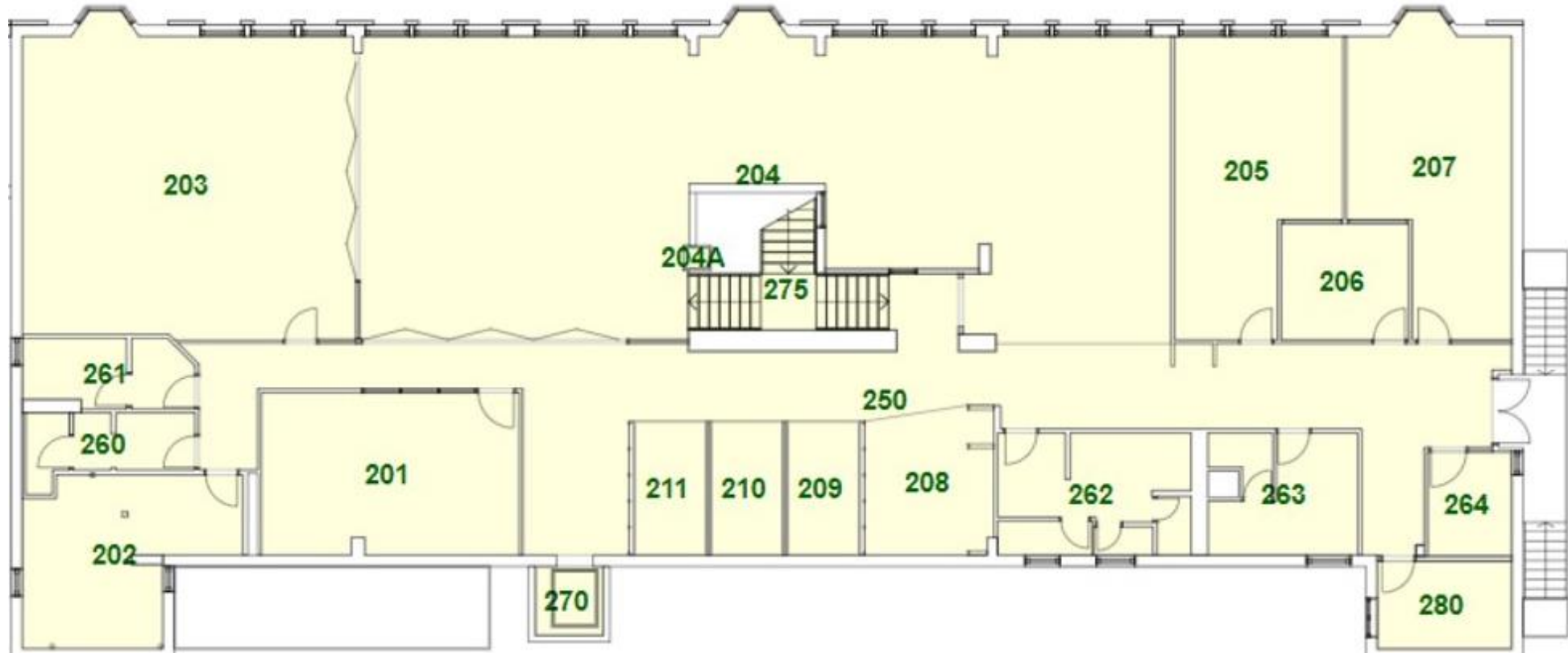
The Junction



Ground Level Floorplan



Level One Floorplan



Seated Event Example

Existing Junction furniture used on floorplan

- 96 chairs in Junction
 - 9 square tables in groups of 3
- Student Life hire equipment used on floorplan
- 13 trestle tables
 - Red and black tablecloths



3 x square junction tables joined together to make a 6 or 8 seater



Trestle tables hired from Student Life – Resource Booker

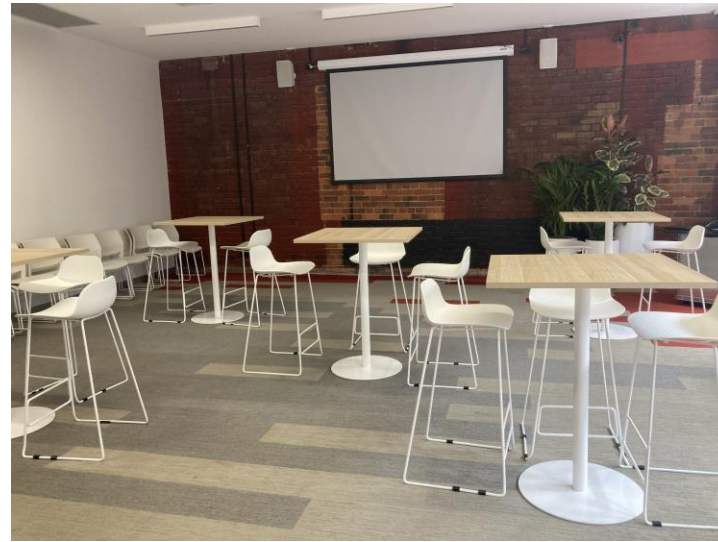


Networking Event Example

- Junction high bar tables and stools used
- Option to go without stools if you'd prefer guests to walk around and mingle with each other



Existing bar tables and stools



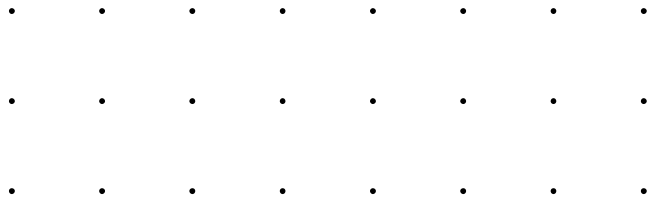
SWIN
BUR
NE

SWINBURNE
UNIVERSITY OF
TECHNOLOGY

.

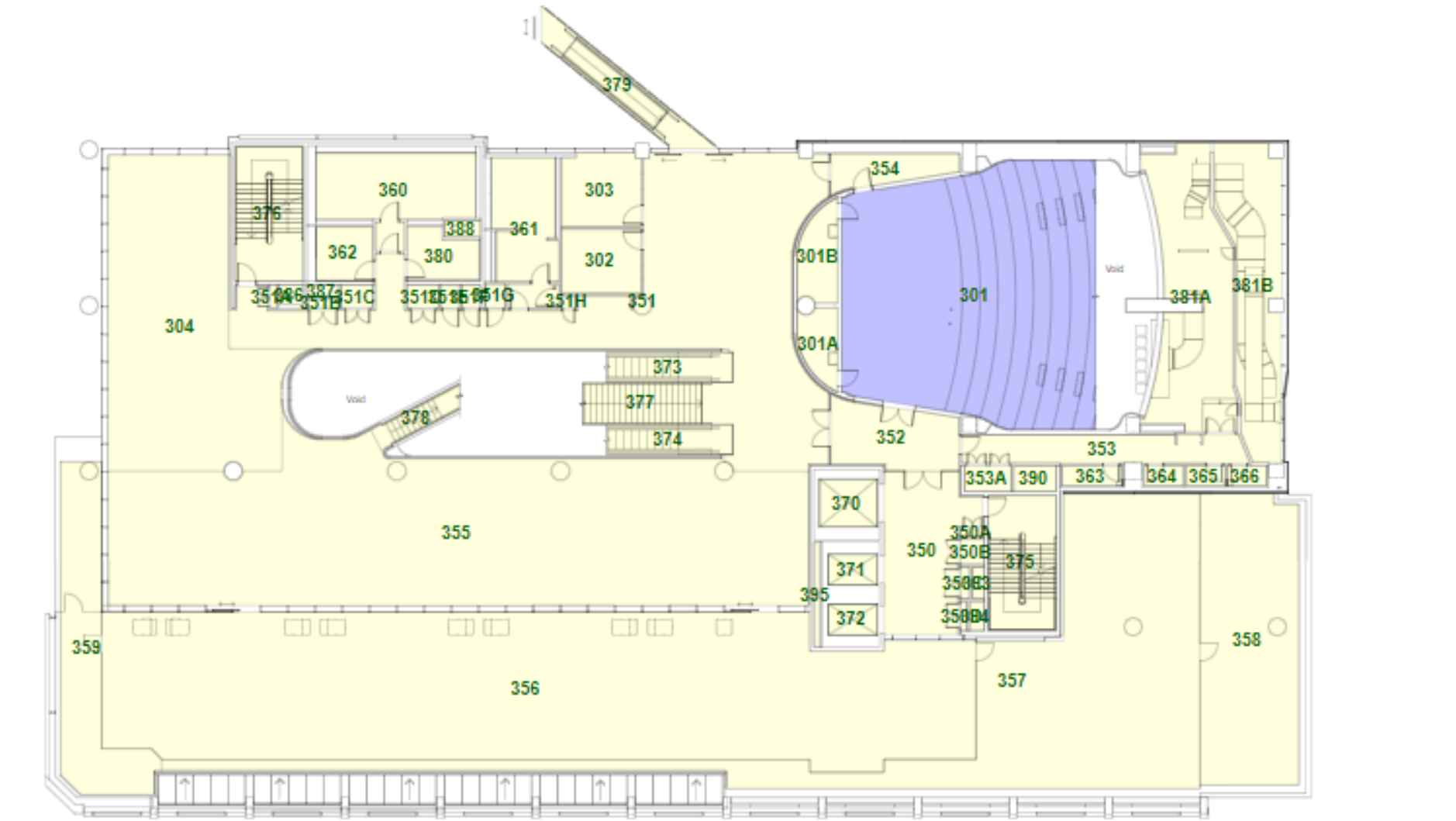
Junction Meeting Set-up for Larger Groups

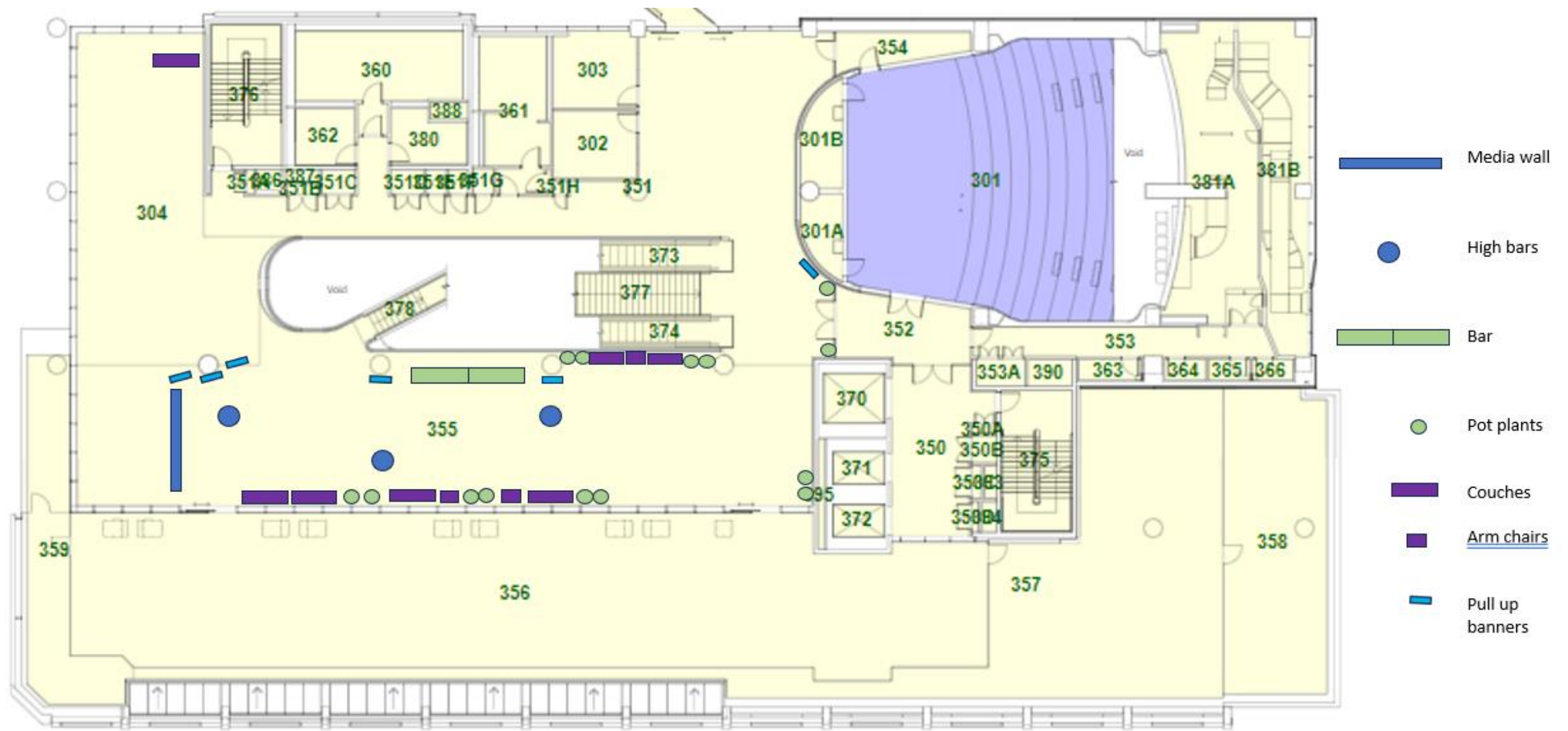




AMDC Sky Lounge





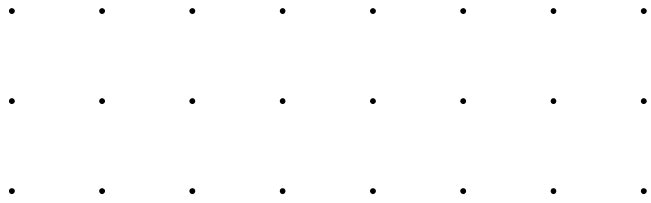


Couches and arm chairs are pre-existing furniture in the space

Tables and cloths can be hired from Student Life

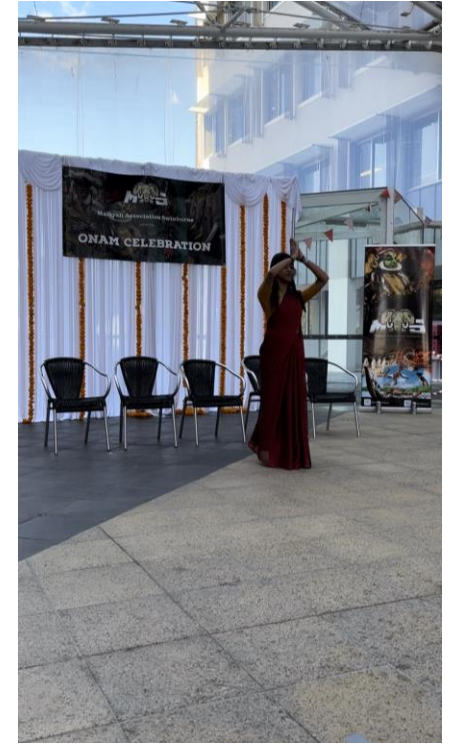
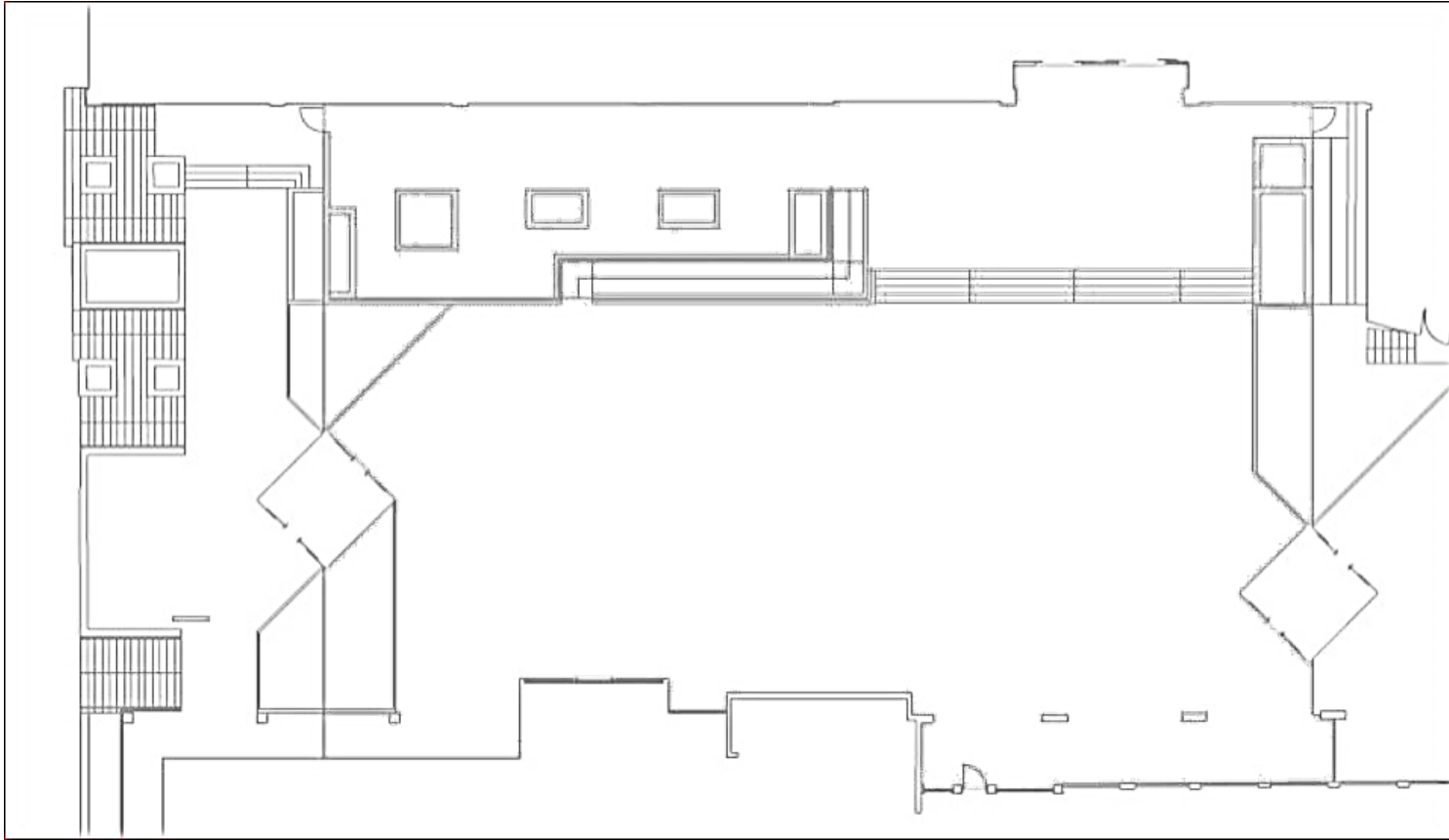
You would need to provide your own banners, pot plants, high bar tables and media wall

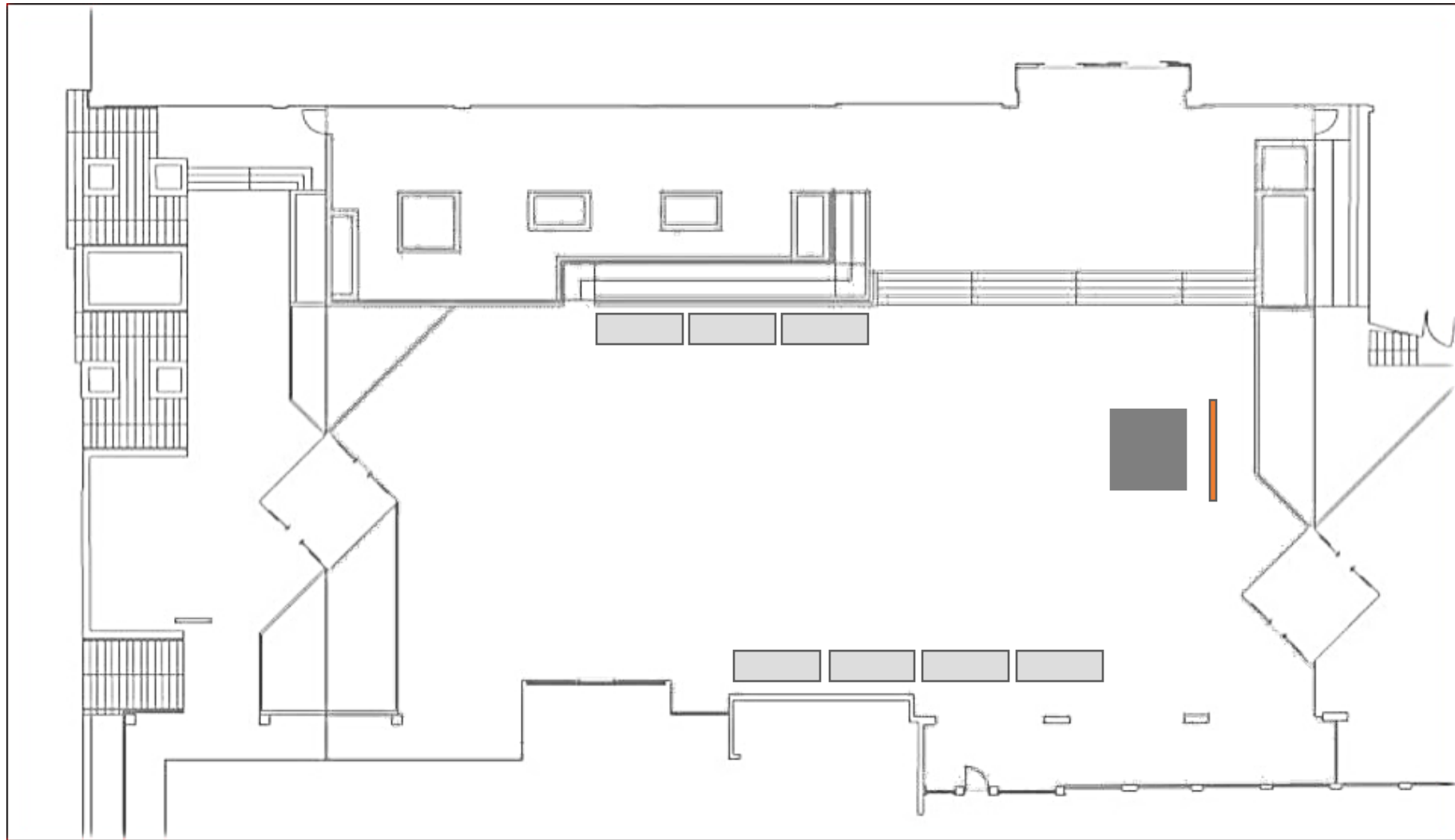




The Atrium







- Trestle Table
- 2m x 2m Stage from IT
- Media Wall



You can hire tables and tablecloths from Student Life.
A 2m x 2m stage can be hired from IT, please contact an
Events and Experiences Officer for assistance.

• • • • • • • •
• • • • • • • •
• • • • • • • •

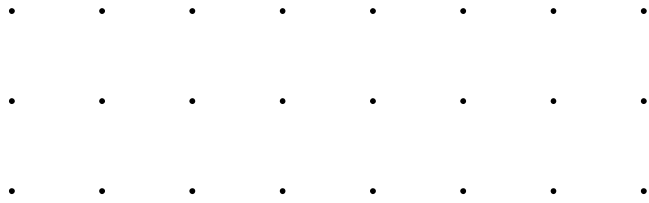
Outdoor Spaces

• • • • • • • • •
• • • • • • • • •
• • • • • • • • •
• • • • • • • • •
• • • • • • • • •
• • • • • • • • •
• • • • • • • • •

TD
Courtyard

Capacity - 150





Swinery/BBQ Area/GS Corner

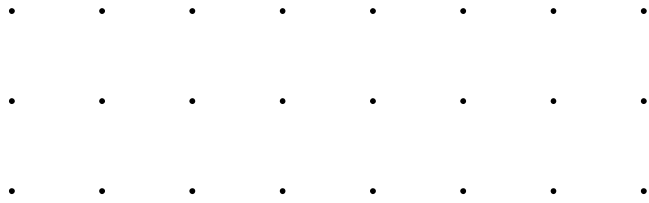




• • • • •
• • • • •
• • • • •

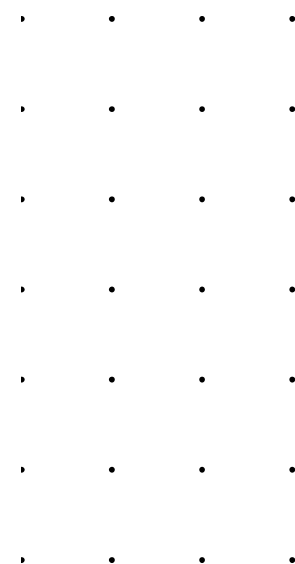
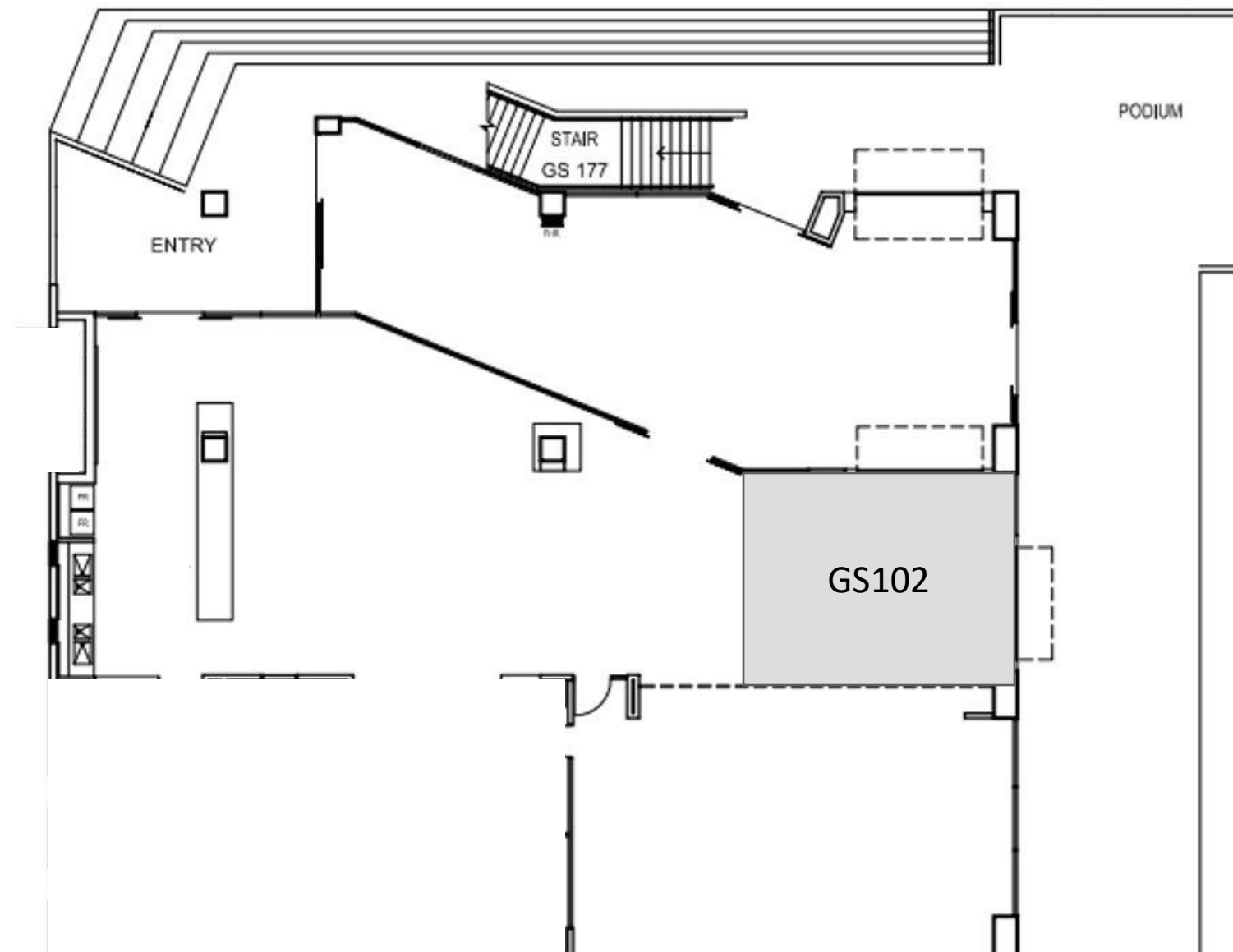
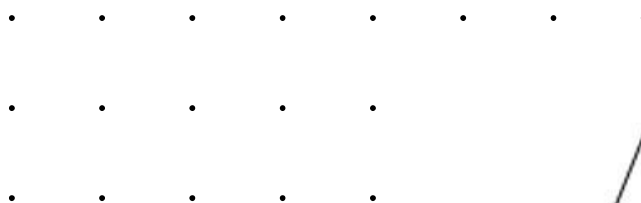
GS Corner





George Building GS102

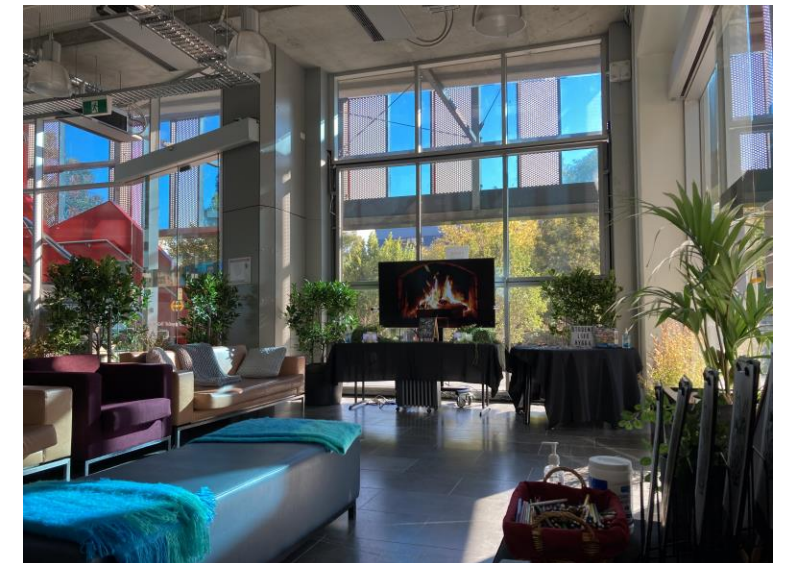
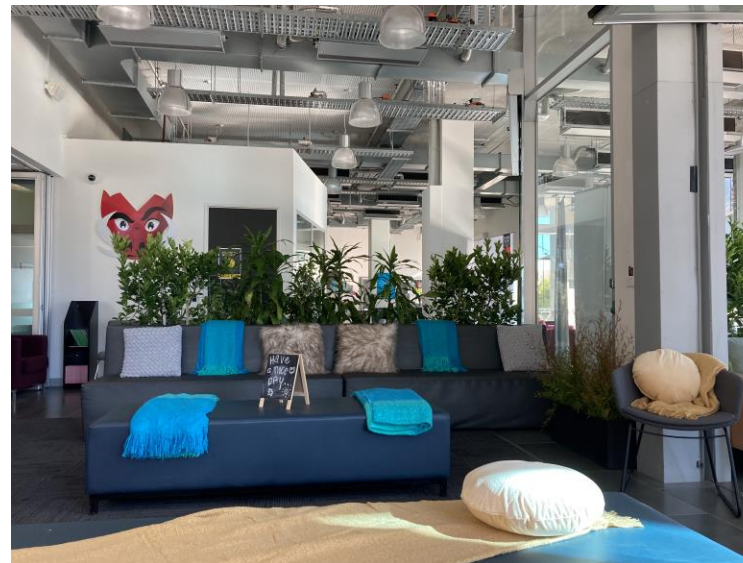


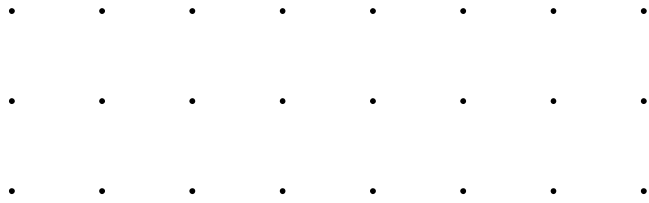


-
-
-
-
-
-
-
-

Hygge 2022

- Chill out zone with hot beverages
- Items Booked:
 - Pillows
 - Blankets
 - 2 x Trestle Tables
 - 2 x Tablecloths
 - 1 x Urn
 - 1 x TV Screen

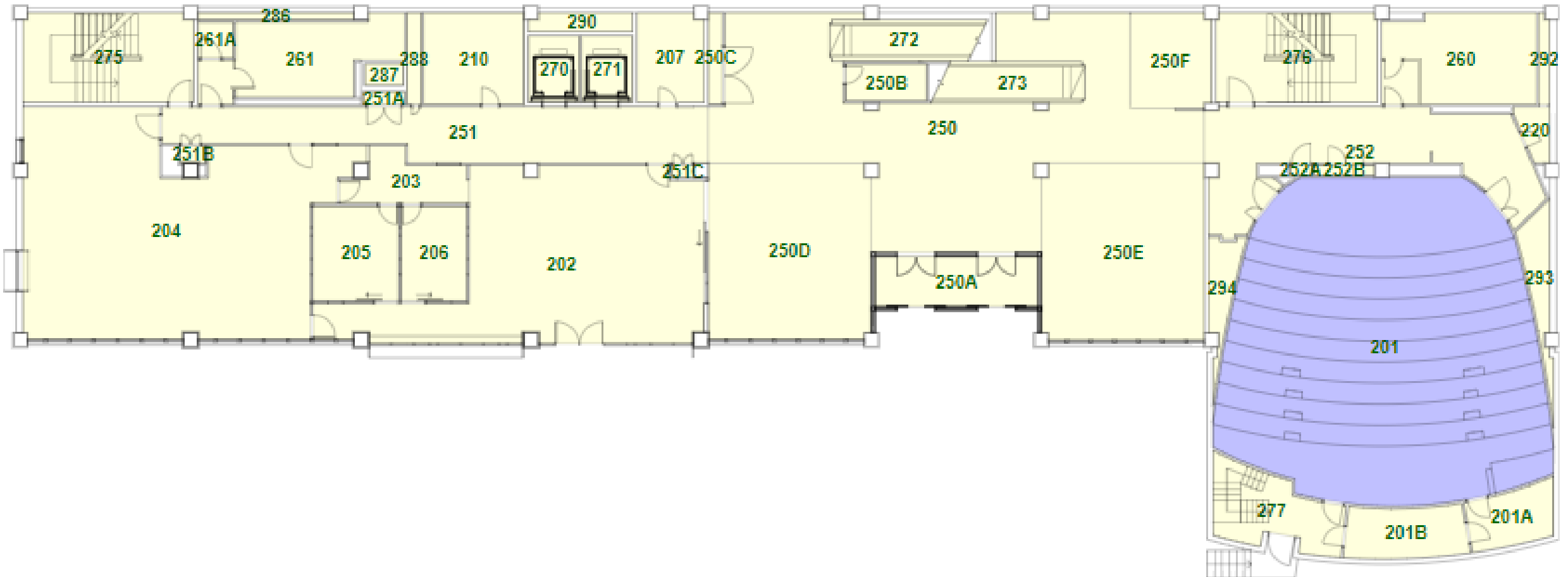




Lecture Theatres



BA Lecture Theatre - BA201



BA Lecture
Theatre

BA201

Capacity - 223



SWIN
BUR
NE

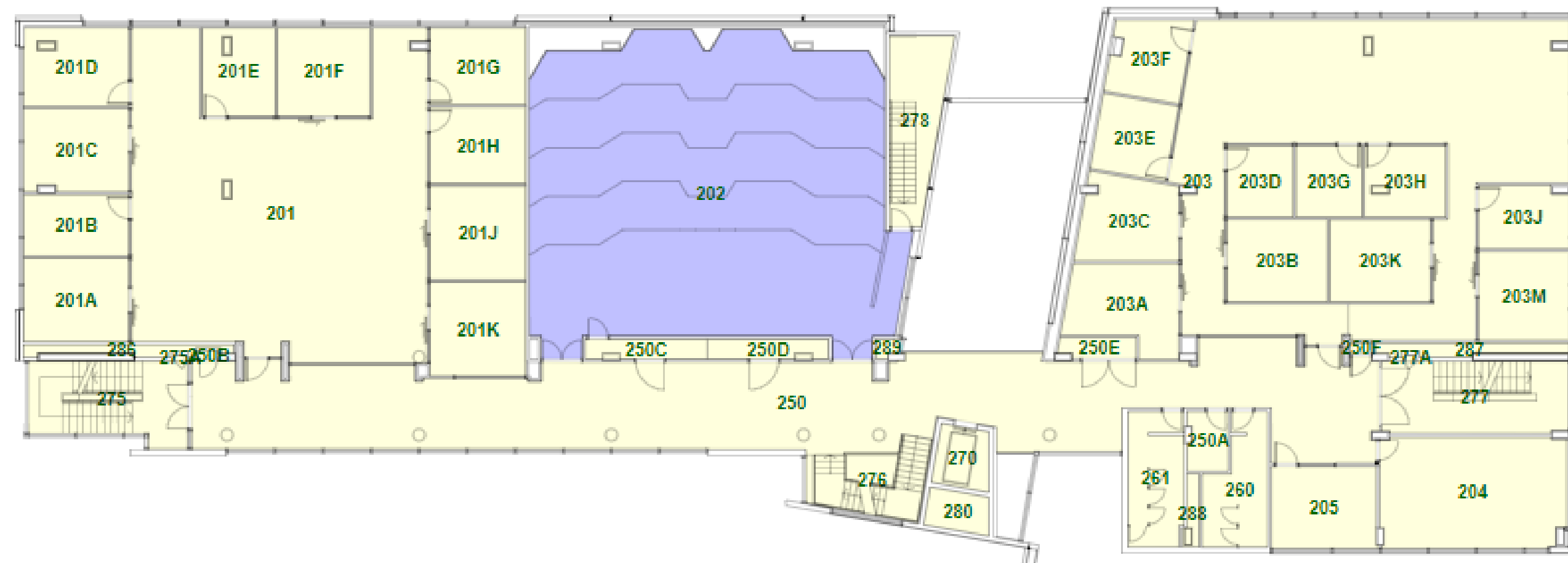
SWINBURNE
UNIVERSITY OF
TECHNOLOGY

.

.

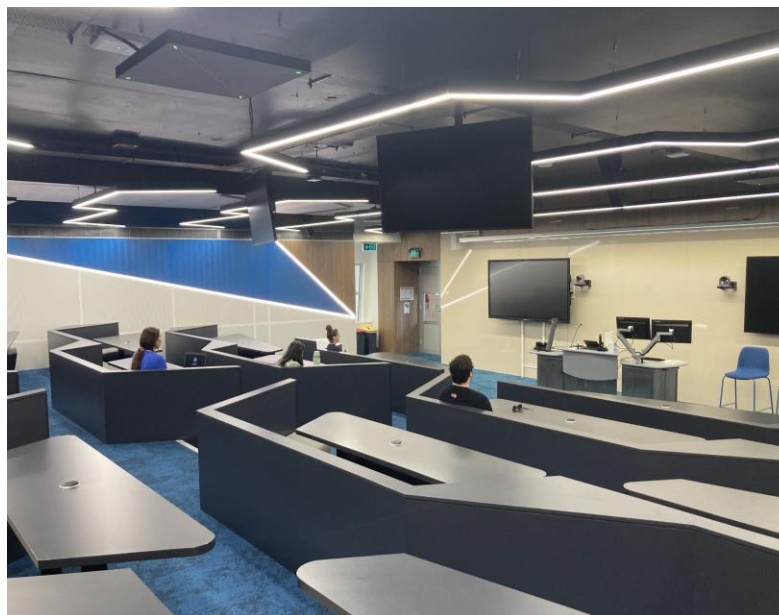
.

AGSE202 Lecture Theatre

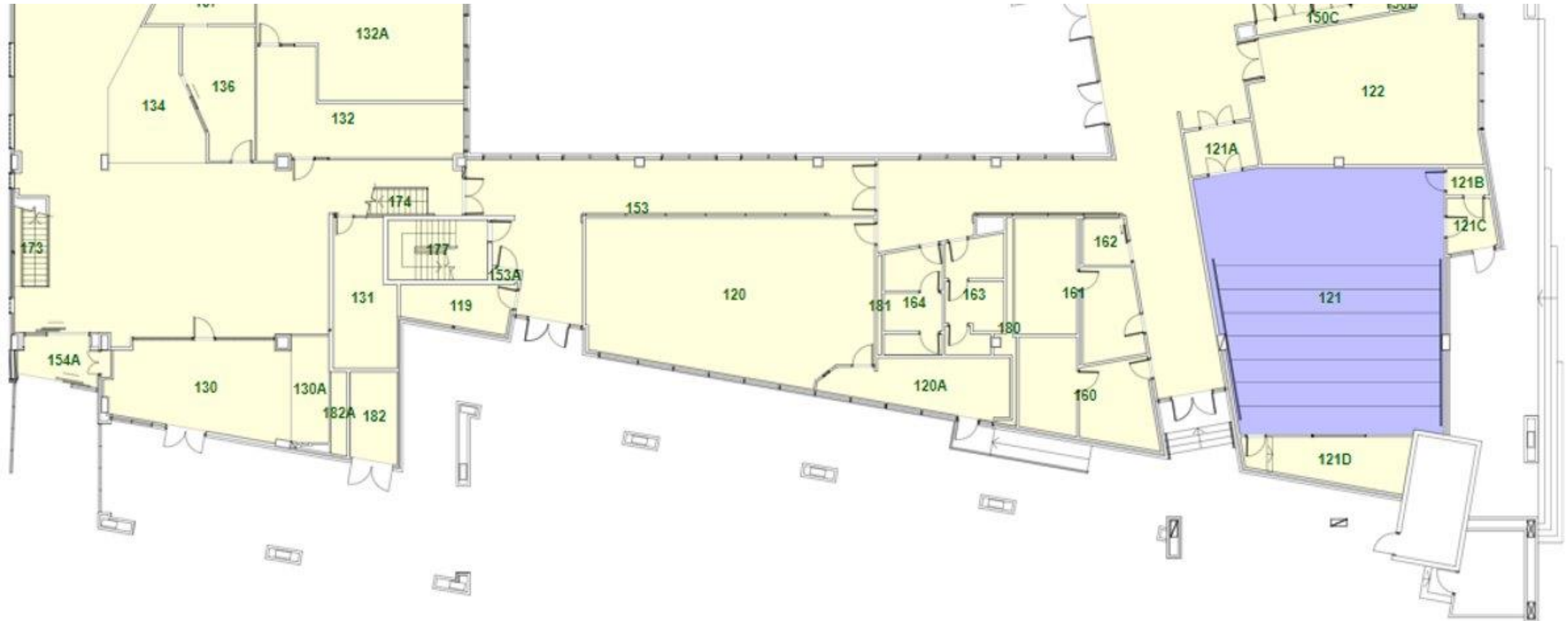


AGSE202
Lecture Theatre

Capacity - 117

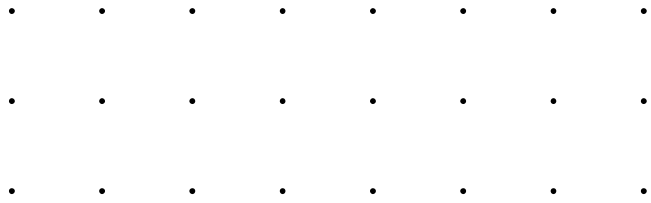


TD121 Lecture Theatre



TD121
Lecture
Theatre
Capacity - 100





Multi-Faith Centre

Swinburne Student Life -
Book a space



GS303 Yoga and mindfulness space

Capacity –
15 for Yoga
25 for Other
activities



This is a no- shoes
space

GS302

Capacity - 40



SWIN
BUR
NE

SWINBURNE
UNIVERSITY OF
TECHNOLOGY

GS310

Capacity - 30



GS307

Capacity - 6

